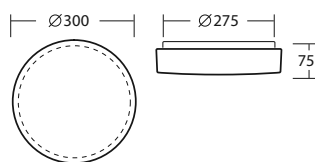


DELIA 1



PC - náhradní stínítko/spare shade/запасной плафон

kód/code/код	typ/type/тип	D [mm]
20520	PC22	300



DELIA 1 POLYKARBONÁTOVÉ STÍNÍTKO/POLYCARBONATE SHADE IP44

kód code код	typ type тип	zdroj source лампа	příkon input [W]	objímka socket патрон	T [h]
--------------------	--------------------	--------------------------	------------------------	-----------------------------	----------

A

56075	IN-12KN62/PC22		40	E27	
-------	----------------	--	----	-----	--

EVG

56076	E-16KN62/PC22		26	G24q3	
56077	E-101KN62/PC22		22	2GX13	
56078	E-25KN62/PC22		2x18	2xG24q2	

S

56079	IN-12KN62/PC22 HF		40	E27	
56080	E-16KN62/PC22 HF		26	G24q3	

N

56081	NZ-13/PC22		13	G24q1	1
-------	------------	--	----	-------	---

NE

56082	NK-E-26/PC22		26	G24q3	1
-------	--------------	--	----	-------	---

LED IP54

kód code код	kód code код	typ type тип	[lm] 3000K	[lm] 4000K	příkon input [W]	T [h]
53315	53815	LED-1L13B07KN62/PC22 .000	1940	2030	15	
53316	53816	LED-1L14B07KN62/PC22 .000	2590	2700	20	

DIM

53317	53817	LED-1L14B07KN62/PC22 1-10V .000	2590	2700	20	
53318	53818	LED-1L14B07KN62/PC22 DALI .000	2590	2700	20	

S

53319	53819	LED-1L13B07KN62/PC22 HF .000	1940	2030	15	
53320	53820	LED-1L14B07KN62/PC22 HF .000	2590	2700	20	

NE

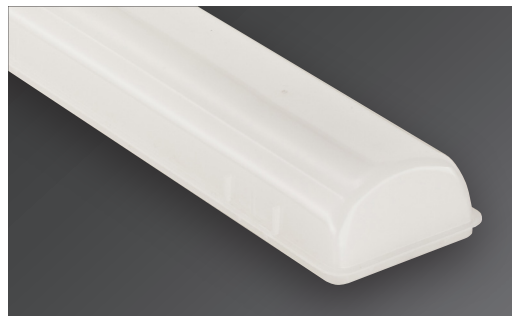
53321	53821	LED-1L13B07KN62/PC22/NK1W .000	1940	2030	15	3
53322	53822	LED-1L14B07KN62/PC22/NK1W .000	2590	2700	20	3

NES

53323	53823	LED-1L13B07KN62/PC22/NK1W HF .000	1940	2030	15	3
53324	53824	LED-1L14B07KN62/PC22/NK1W HF .000	2590	2700	20	3

Technical options

Our new opal diffuser has an **outstanding light transmissivity** up to **93%**. With this great light permeability, it is an **excellent choice for luminaires equipped with LED-modules**.



Unique
on the market



Usual stainless steel clips for **SELV** (Safety Extra Low Voltage) solutions.

The opal diffusers are made of UV-stabilized **opalized** material, specially developed for LED applications. This ensures among others a well-balanced light distribution and the **elimination of glaring**.

The special "antivandal" stainless steel clips for **non-SELV (HV)** solutions can not be released with bare hands.



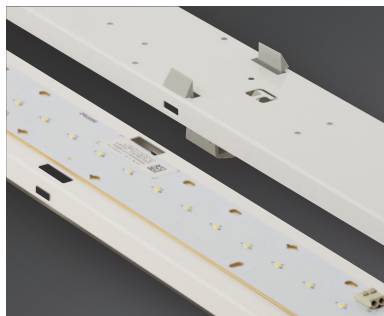
With 771-Favourite LED - depending on customer requirements - we can reach different levels of luminous flux (lumen) as well as luminous efficacy (lm/Watt). Details see attached overview.



In order to optimize the thermal management of the luminaire we avoid the direct contact of the gear tray and driver, thus increasing the lifetime of the modules and driver.

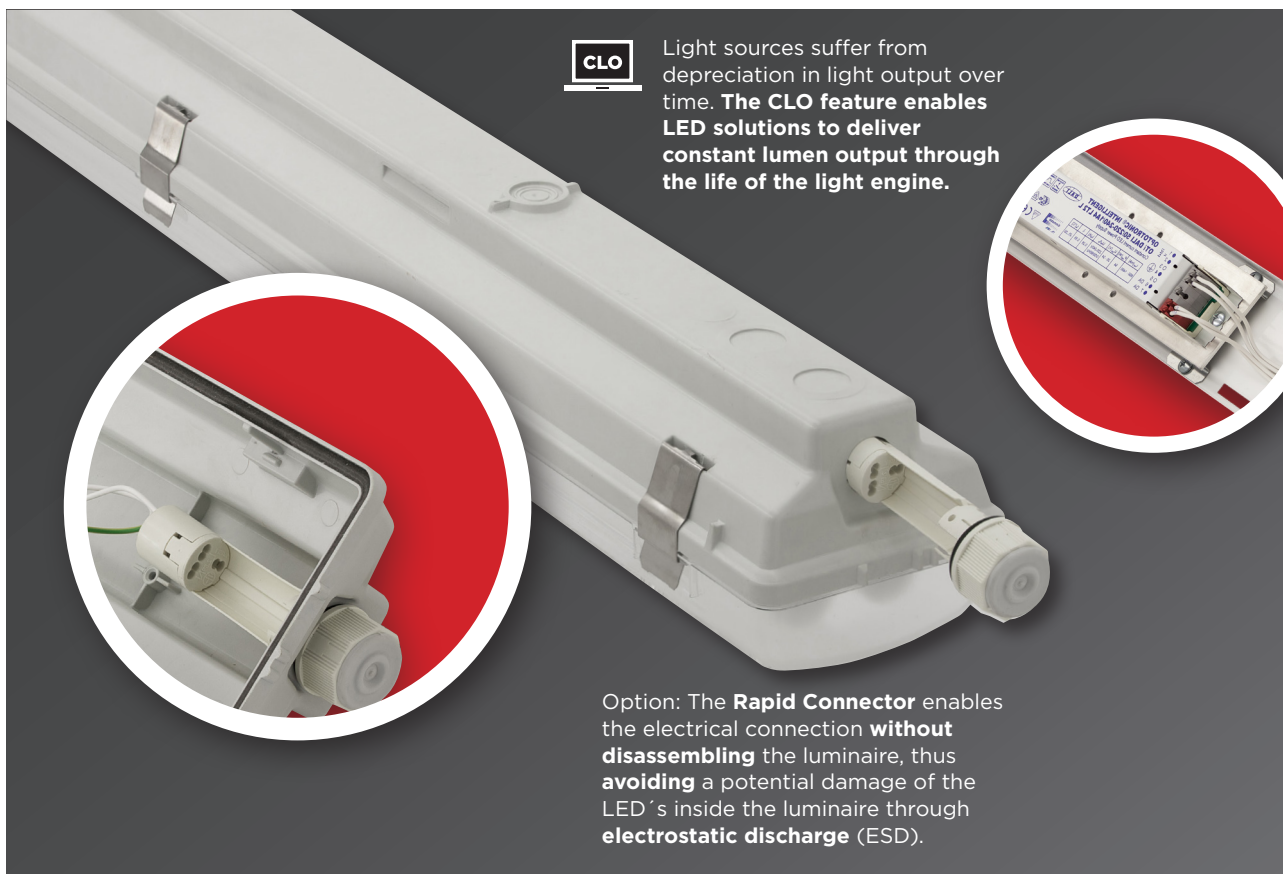


LED-Version with motion sensor



The gear tray is made of white powder coated steel sheet according to **Zhaga** standards. On request customisation possible.

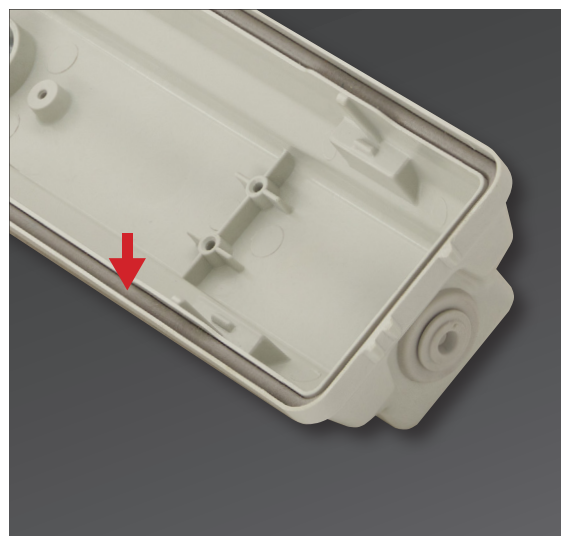
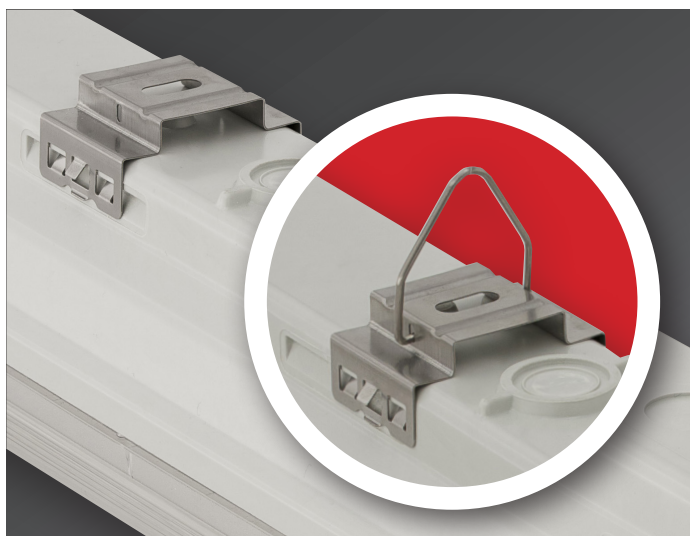
LED



Light sources suffer from depreciation in light output over time. The **CLO** feature enables LED solutions to deliver constant lumen output through the life of the light engine.

Option: The **Rapid Connector** enables the electrical connection **without disassembling** the luminaire, thus **avoiding** a potential damage of the LED's inside the luminaire through **electrostatic discharge (ESD)**.

771 - FAVOURITE LED



Ways of installing:

1. With stainless steel suspension brackets (easy-to-install) onto the ceiling.
2. Suspension on chains with stainless steel suspension brackets mounted with hooks.

In order to ensure maximum chemical and weather resistance, silicon-based gasket with enhanced resistance is optionally available.



VIZULO

FERN

2017

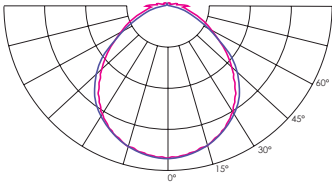


TYPE OF DIFFUSER

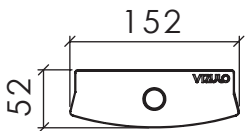
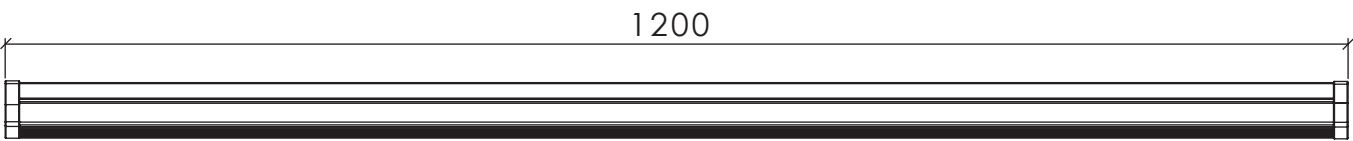


Prismatic

OPTICS



DIMENSIONS

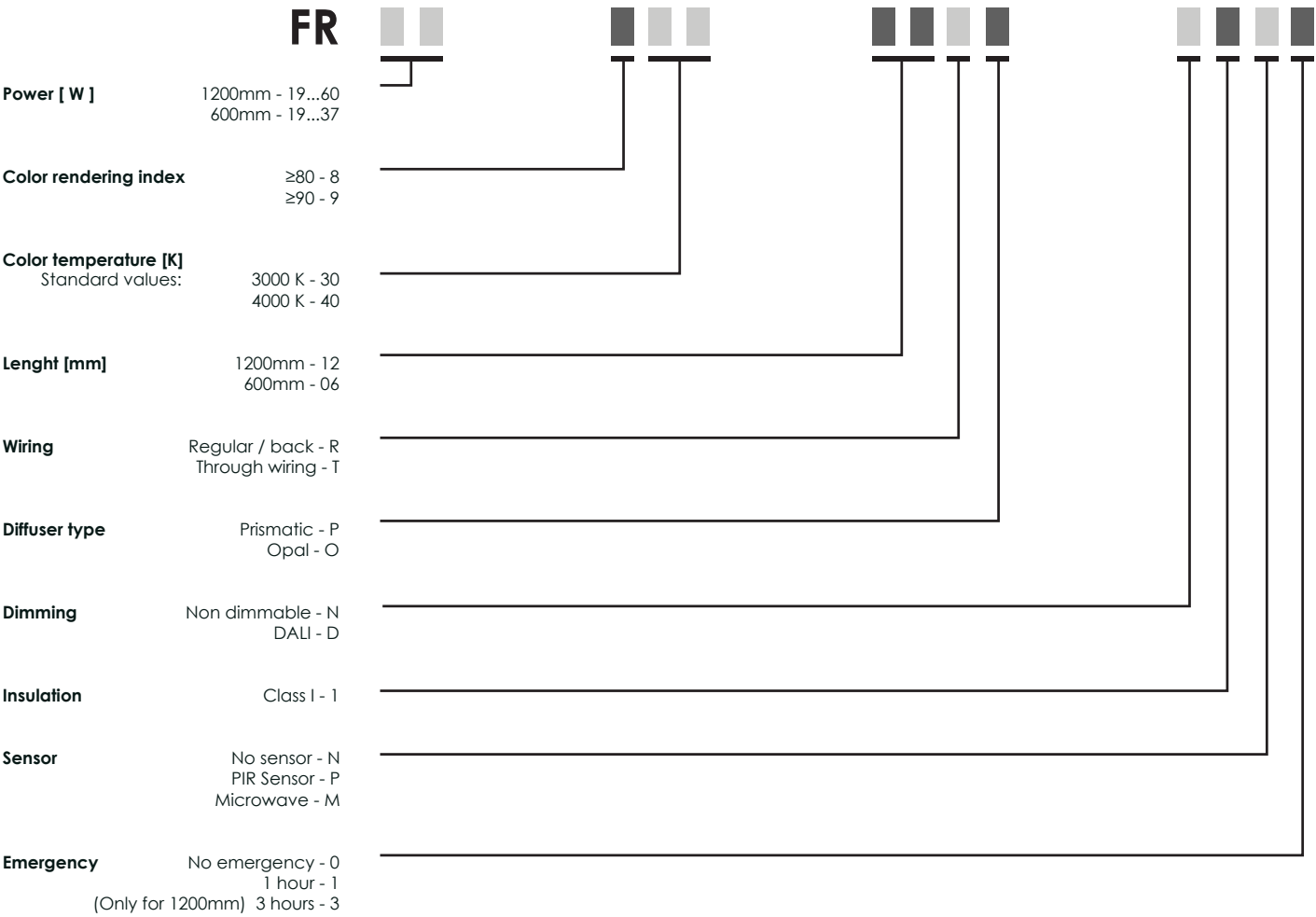


TECHNICAL INFORMATION

Voltage, V	220-240
Frequency, Hz	50-60
Chromaticity tolerance (initial MacAdam)	3
Power, W	19-60
Luminous Flux, Lm	Up to 8100
Efficacy, Lm/W	Up to 140
Power factor, PF	>0,85
Cover type	Prismatic
Color temperature, K	3000, 4000
Working temperature, °C	+10°C to +40°C
CRI	Ra>80
Protection class	IP44
Dimensions	1225,6x148x48,5
Safety class	I
Mounting	Surface
Body material	Steel sheet
Body color	White - RAL 9016
Dimming	DALI
Warranty, years	5
Service Life, h	50 000 h L80B10 at 25°C

Technical parameters for final product can differ from typical data by 7% due to special conditions of LED manufacturing processes.

MODEL NAME PRINCIPLES



* OTHER CODES CAN BE GENERATED AFTER CUSTOMER REQUEST!

FERN NON DIMMABLE

ARTICLE	MODEL NUMBER	RATED INPUT POWER	SIZE	CCT	LUMINOUS FLUX, LM	LUMINOUS EFFICACY, LM/W	COLOR	SENSOR	COVER	DIMMING
66000002	FR 31 830 12RP N1N0	31 W	1200 mm	3000 K	4309 lm	139 lm/W	White	-	Prismatic	ND
66000003	FR 32 830 12RP N1M0	32 W	1200 mm	3000 K	4309 lm	134 lm/W	White	Microwave	Prismatic	ND
66000004	FR 31 840 12RP N1N0	31 W	1200 mm	4000 K	4411 lm	141 lm/W	White	-	Prismatic	ND
66000005	FR 32 840 12RP N1M0	32 W	1200 mm	4000 K	4411 lm	137 lm/W	White	Microwave	Prismatic	ND
66000006	FR 37 830 12RP N1N0	37 W	1200 mm	3000 K	4960 lm	134 lm/W	White	-	Prismatic	ND
66000007	FR 38 830 12RP N1M0	38 W	1200 mm	3000 K	4960 lm	130 lm/W	White	Microwave	Prismatic	ND
66000008	FR 37 840 12RP N1N0	37 W	1200 mm	4000 K	5186 lm	140 lm/W	White	-	Prismatic	ND
66000009	FR 38 840 12RP N1M0	38 W	1200 mm	4000 K	5186 lm	136 lm/W	White	Microwave	Prismatic	ND
66000010	FR 45 830 12RP N1N0	45 W	1200 mm	3000 K	5902 lm	131 lm/W	White	-	Prismatic	ND
66000011	FR 46 830 12RP N1M0	46 W	1200 mm	3000 K	5902 lm	128 lm/W	White	Microwave	Prismatic	ND
66000012	FR 45 840 12RP N1N0	45 W	1200 mm	4000 K	6171 lm	137 lm/W	White	-	Prismatic	ND
66000013	FR 46 840 12RP N1M0	46 W	1200 mm	4000 K	6171 lm	134 lm/W	White	Microwave	Prismatic	ND
66000014	FR 60 830 12RP N1N0	60 W	1200 mm	3000 K	7500 lm	125 lm/W	White	-	Prismatic	ND
66000015	FR 61 830 12RP N1M0	61 W	1200 mm	3000 K	7500 lm	123 lm/W	White	Microwave	Prismatic	ND
66000016	FR 60 840 12RP N1N0	60 W	1200 mm	4000 K	7841 lm	131 lm/W	White	-	Prismatic	ND
66000017	FR 61 840 12RP N1M0	61 W	1200 mm	4000 K	7841 lm	128 lm/W	White	Microwave	Prismatic	ND

FERN DALI

ARTICLE	MODEL NUMBER	RATED INPUT POWER	SIZE	CCT	LUMINOUS FLUX, LM	LUMINOUS EFFICACY, LM/W	COLOR	SENSOR	COVER	DIMMING
66000018	FR 31 830 12RP D1N0	31 W	1200 mm	3000 K	4330 lm	139 lm/W	White	-	Prismatic	DALI
66000019	FR 32 830 12RP D1M0	32 W	1200 mm	3000 K	4330 lm	135 lm/W	White	Microwave	Prismatic	DALI
66000020	FR 31 840 12RP D1N0	31 W	1200 mm	4000 K	4411 lm	142 lm/W	White	-	Prismatic	DALI
66000021	FR 32 840 12RP D1M0	32 W	1200 mm	4000 K	4411 lm	138 lm/W	White	Microwave	Prismatic	DALI
66000022	FR 37 830 12RP D1N0	37 W	1200 mm	3000 K	4974 lm	134 lm/W	White	-	Prismatic	DALI
66000023	FR 38 830 12RP D1M0	38 W	1200 mm	3000 K	4974 lm	130 lm/W	White	Microwave	Prismatic	DALI
66000024	FR 37 840 12RP D1N0	37 W	1200 mm	4000 K	5200 lm	140 lm/W	White	-	Prismatic	DALI
66000025	FR 38 840 12RP D1M0	38 W	1200 mm	4000 K	5200 lm	136 lm/W	White	Microwave	Prismatic	DALI
66000026	FR 45 830 12RP D1N0	45 W	1200 mm	3000 K	5922 lm	131 lm/W	White	-	Prismatic	DALI
66000027	FR 46 830 12RP D1M0	46 W	1200 mm	3000 K	5922 lm	128 lm/W	White	Microwave	Prismatic	DALI
66000028	FR 45 840 12RP D1N0	45 W	1200 mm	4000 K	6192 lm	137 lm/W	White	-	Prismatic	DALI
66000029	FR 46 840 12RP D1M0	46 W	1200 mm	4000 K	6192 lm	134 lm/W	White	Microwave	Prismatic	DALI
66000030	FR 60 830 12RP D1N0	60 W	1200 mm	3000 K	7520 lm	125 lm/W	White	-	Prismatic	DALI
66000031	FR 61 830 12RP D1M0	61 W	1200 mm	3000 K	7520 lm	123 lm/W	White	Microwave	Prismatic	DALI
66000032	FR 60 840 12RP D1N0	60 W	1200 mm	4000 K	7861 lm	131 lm/W	White	-	Prismatic	DALI
66000033	FR 61 840 12RP D1M0	61 W	1200 mm	4000 K	7861 lm	128 lm/W	White	Microwave	Prismatic	DALI